



Chair

Thomas Wutzler- Helfen  
(027 500 600)

Secretary

Taryn Playle-The Law Company  
(027 220 8288)

Treasurer

Phil Johnson – Spreadbooks  
(027 677 3029)

Board

Uli Muellner –EPI –Interactive  
(027 292 2296)

Lalita Kasanji –  
Miramar Natural Health Centre  
(021 0234 0383)

Steve Satherley –  
Miramar Liqueurland  
(021 771 027)

Dan Henry  
Beaconhill Enterprises  
(021 355 848)

Phil Hughes  
Palmers Garden Centre  
(029 939 4535)

Jake Downing  
Weta Workshop  
(027 652 9017)  
BID Liaison Officer  
Mary Anderson  
(021 250 0707)



# Miramar business news ISSUE #18

November 2018

## EDITORIAL

### The Board has been busy with the following projects:

- Lodging the Appeal on the Resource Consent for the Shelly Bay Development
  - Continuing the updating of the Miramar Peninsula website
  - Consulting with WCC on the Miramar Ave Development
  - Continuing expanding the Free Wi-Fi network
  - Continuing consultation with WCC - Cycleways;
  - Continue working with WCC and WREMO to develop a Resilience plan.
  - Organised the new EMPI office at 149 Park Road Miramar
  - Predator Free
  - Working with WCC - Councils 10 year Long Term Plan
  - Continue being an effective conduit of information concerning the Peninsula as well as other ongoing projects.
- 
- **NEW Projects:** Bike Share - Following the successful installation of Bike racks and Bike Fixit stations on the Peninsula along with the current emphasis of WCC on cycling, Cycleways, and the changing of the Bus service we have been talking with Bikes Welcome and Next bikes looking to introduce the concept of Bike Share into the Peninsula. Bike share has been successful in many cities around the world, we will update you as this project continues.

EMPI Board and the projects we are working on wouldn't exist without the support of you, the members.

We welcome ALL ideas, comments and feedback - feel free to contact:

**Chair** Thomas Wutzler

027 250 0600

[chair@miramarpeninsula.org.nz](mailto:chair@miramarpeninsula.org.nz)

**BID Liaison Officer** Mary  
Anderson

021 250 0707

[admin@miramarpeninsula.org.nz](mailto:admin@miramarpeninsula.org.nz)

**AGM 2018 Held 14<sup>th</sup> November at the Miramar Golf Links.**

On behalf of the Board and the Members of Enterprise Miramar Peninsula Inc we would like to thank **Uli Mueller** for the work he has done for the past 4 years on getting the free Wifi hotspots into place. Uli has stepped down due to work and family commitments.

The Board and Members of Enterprise Miramar Peninsula Inc welcome Annwyn Tobin from Floriade who has stepped up to take Uli's place.

The AGM was well supported with 4 businesses putting on a display to show what their businesses are about. Please refer to the Chairman's (Thomas Wutzler) report in the Booklet given to you following up from the AGM.

Thank you to the following local businesses:

**Realglass – Tony Kuepfer**

9 Ropa Lane Miramar



**Floriade – Annwyn Tobin**

91A Park Road, Miramar



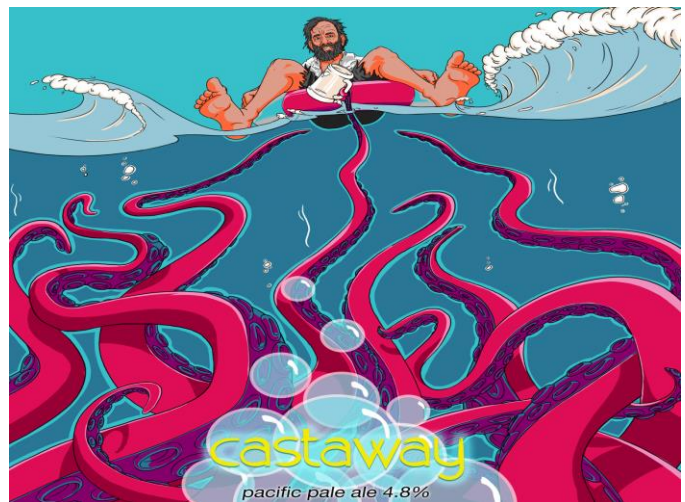
**Markholms – Sally Ashby**

28 Tauhinu Road, Miramar



**Double Vision Brewing - Warren Drahota, Evarn Flaunty, Harry Henrickson, Mario Lanz**

128 Park Road, Miramar



**With summer and the warmer weather take the family on the Eastern Walkway loop to Breaker Bay**



A 4.2km walk that takes about 1½ to 2 hours. This loop walk has a common entry and exit point and is suitable for those with average fitness. Along the walk there are Māori historical sites and the Ataturk Memorial and spectacular views of Wellington harbour.

Starting at Tarakina Bay on Wellington's south coast, the walk has entry / exit points from Bury Grove, Sidlaw Street, Signallers Grove and Inglis Street (Pass of Branda).

### Directions

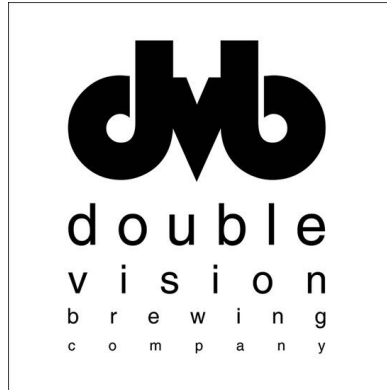
This loop walk starts at Tarakina Bay on Wellington's south coast and has entry/exit points from Bury Grove, Sidlaw Street, Signallers Grove and Inglis Street (Pass of Branda). On the way you will see many Māori historical sites and spectacular views of Wellington harbour.

Start at Tarakina Bay and head up hill on the Eastern Walk way to the Ataturk Memorial. The walk continues in the open until you pass Bury Grove and start to head in to the bush. The track leads down hill and across the eastern side of the ridge and then heads uphill again. The next junction is Sidlaw Street. From here you walk along the ridge. You come to a junction where you can go left and out to Signallers Grove, but take a right and head down hill. You will soon be in the open again.

You drop down reasonably steeply to the road at the Pass of Branda. Head south along Breaker Bay Road back to Tarakina Bay. **ENJOY**

**Welcome to: Double Vision Brewing - Warren Drahot, Evarn Flaunty, Harry Henrickson, Mario Lanz**

128 Park Road Miramar Wellington 6022  
022 407 8926  
Warren@doublebrewing.com



**Welcome to: Floriade - Annwyn Tobin**

91 Park Rd, Miramar, Wellington 6022  
<https://floriade.co.nz/>  
021 081 89525  
Email: flowers@floriade.co.nz



**Would you like to be Business of the Month??? Business of the Month means you get a feature on the Miramar Peninsula Website and the Miramar Peninsula Facebook Page at no cost to members.**

I would like to thank the EMPI Board and EMPI Members for their support during 2018 and

**Wish you all a very Merry Christmas and relaxing New Year.**

If you have some news or events that you would like to add to our newsletter or put up on our facebook page, please do not hesitate to contact me.

**Regards Mary 021 250 0707**